

# **MAYURAKSHI GRAMIN COLLEGE**

(Permanent Affiliated to S.K.M. University, Dumka, Jharkhand)

AT+P.O- RANISHWAR, DIST- DUMKA, 814148,  
JHARKHAND

STUDENT SATISFACTION SURVEY (SSS)

**2020-21**

## **Offline Student Satisfaction Survey Analysis Report (2020-21)**

Student Satisfactory Survey with questionnaire proposed by the NAAC is collected offline this academic year. This questionnaire consists of 20 questions and 3 Suggestions which focuses on the teaching – learning, evaluation process and infrastructure of the institution. All questions are mandatory.

Mayurakshi Gramin College has conducted Student Satisfaction Survey for students. This was conducted offline by providing manual forms to students. Out of total students 160 students have given Feedback forms. Through Students Satisfaction Survey (SSS) outcome, computing & analyzing all responses is given separately for offline.

### **Overall Analysis of the Student Satisfaction Survey**

The graphs represent the different views expressed by the students in regard to their perception of quality in the institution. On an average, 83.34% students are satisfied with the teaching methodology and facilities available at our institute.

# National Assessment and Accreditation Council (NAAC)

## Student Satisfaction Survey

### Key Indicator-2.7.1

#### Under Criterion II OF Teaching-Learning and Evaluation

#### Guidelines for Students

NAAC (National Assessment and Accreditation Council) is conducting a Student Satisfaction Survey regarding Teaching –Learning and Evaluation, which will help to upgrade the quality in higher education. A student will have to respond to all the questions given in the following format with her/his sincere effort and thought. Her/his identity will not be revealed.

A) Please confirm this is the first and only time you answer this survey.

- a) Yes                      b) No

B) Age                      C) College Name:

D) Gender:    a) Female        b) Male                          C) Transgender                     

E) What degree program are you pursuing now?

- a) Bachelor's                          b) Master's                                            c) M.Phil.                        
d) Doctorate                          e) Other

F) What subject area are you currently pursuing?

- a) Arts                                            b) Commerce                                            c) Science                        
d) Professional                          e) Other

#### Instructions to fill the questionnaire

- All questions should be compulsorily attempted.
- Each question has five responses, choose the most appropriate one.
- The response to the qualitative question no. 21 is student's opportunity to give suggestions or improvements; she/he can also mention weaknesses of the institute here. (Kindly restrict your response to teaching learning process only)

**Criterion II-Teaching-Learning and Evaluation**

**Student Satisfaction Survey on Teaching Process**

**Following are question for online student satisfaction survey regarding teaching learning process.**

**1. How much of the syllabus was covered in the class?**

- 4- 85 to 100%
- 3- 70 to 84%
- 2- 55 to 69%
- 1- 30 to 54%
- 0-Below 30%

**2. How well did the teachers prepare for the classes?**

- 4-Thoroughly
- 3-Satisfactorily
- 2-Poorly
- 1-Indifferently
- 0-Won't teach at all

**3. How well were the teachers able to communicate?**

- 4-Always effective
- 3-Sometimes effective
- 2-Just satisfactorily
- 1-Generally ineffective
- 0-Very poor communication

**4. The teacher's approach to teaching can best be described as**

- 4-Excellent
- 3-Very good
- 2-Good
- 1-Fair
- 0-Poor

**5. Fairness of the internal evaluation process by the teachers.**

- 4-Always fair
- 3-Usually fair
- 2-Sometimes unfair
- 1-Usually unfair
- 0-Unfair

**6. Was your performance in assignments discussed with you?**

- 4-Every time
- 3-Usually
- 2-Occasionally/Sometimes
- 1-Rarely
- 0-Never

**7. The institute takes active interest in promoting internship, student exchange, field visit opportunities for students.**

- 4- Regularly
- 3- Often
- 2- Sometimes
- 1- Rarely
- 0- Never

**8. The teaching and mentoring process in your institution facilitates you in cognitive, social and emotional growth.**

- 4- Significantly
- 3- Very well
- 2- Moderately
- 1- Marginally
- 0- Not at all

**9. The institution provides multiple opportunities to learn and grow.**

- 4- Strongly agree
- 3- Agree
- 2- Neutral
- 1- Disagree
- 0- Strongly disagree

**10. Teachers inform you about your expected competencies, course outcomes and programme outcomes.**

- 4- Every time
- 3- Usually
- 2- Occasionally/Sometimes
- 1- Rarely
- 0- Never

**11. Your mentor does a necessary follow-up with an assigned task to you.**

- 4- Every time
- 3- Usually
- 2- Occasionally/Sometimes
- 1- Rarely
- 0- I don't have a mentor

**12. The teachers illustrate the concepts through examples and applications.**

- 4- Every time
- 3- Usually
- 2- Occasionally/Sometimes
- 1- Rarely
- 0- Never

**13. The teachers identify your strengths and encourage you with providing right level of challenges.**

- 4-Fully
- 3-Reasonably
- 2-Partially
- 1-Slightly
- 0-Unable to

**14. Teachers are able to identify your weaknesses and help you to overcome them.**

- 4-Every time
- 3-Usually
- 2-Occasionally/Sometimes
- 1-Rarely
- 0-Never

**15. The institution makes effort to engage students in monitoring, review and continuous quality improvement of the teaching learning process.**

- 4-Strongly agree
- 3-Agree
- 2-Neutral
- 1-Very little
- 0-Not at all

**16. The institute/teachers use student centric methods, such as experiential learning, participative learning and problem solving.**

- 4-To a great extent
- 3-Moderate
- 2-Some what
- 1-Very little
- 0-Not at all

**17. Teachers encourage you to participate in extracurricular activities.**

- 4-Strongly agree
- 3-Agree
- 2-Neutral
- 1-Disagree
- 0-Strongly disagree

**18. Efforts are made by the institute/teachers to inculcate soft skills, life skills and employability skills to mark you ready for the world of work.**

- 4-To a great extent
- 3-Moderate
- 2-Some what
- 1-Very little
- 0-Not at all

**19. What percentage of teachers use ICT tools such as LCD projector, Multimedia, etc. While teaching.**

4-Above 90%

3-70-89%

2-50-69%

1-30-49%

0-Below29%

**20. The overall quality of teaching-learning process in your institute is very good.**

4-Strongly agree

3-Agree

2-Neutral

1-Disagree

0-Strongly disagree

**21. Give three observation/suggestions to improve the overall teaching-learning experience in your institution.**

a)

b)

c)

## STUDENT SATISFACTORY SURVEY REPORT

**TOTAL NUMBER OF STUDENTS RESPONDED =**

**65**

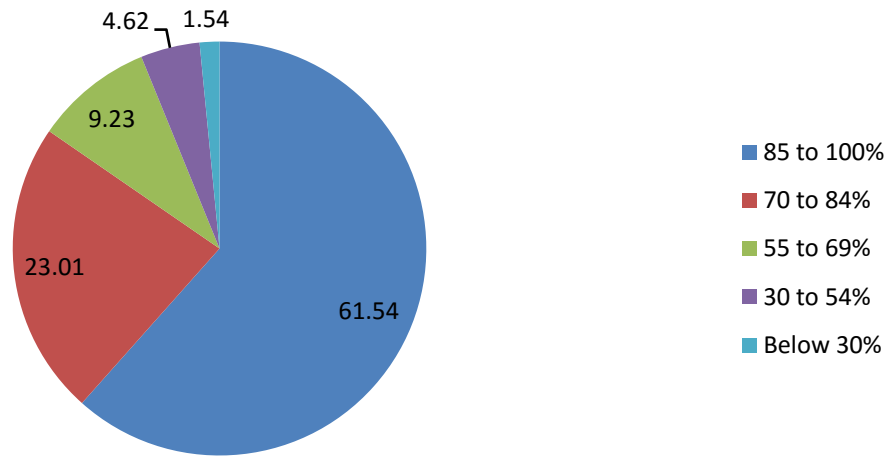
PARAMETERS	STUDENT RESPONSE (In Numbers)					STUDENT RESPONSE (In Percentage)					AVERAGE
	4	3	2	1	0	4	3	2	1	0	
SSS 1	40	15	6	3	1	61.54	23.08	9.23	4.62	1.54	<b>85.69</b>
SSS 2	35	20	5	3	2	53.85	30.77	7.69	4.62	3.08	<b>83.96</b>
SSS 3	37	15	10	2	1	56.92	23.08	15.38	3.08	1.54	<b>84.65</b>
SSS 4	41	10	6	6	2	63.08	15.38	9.23	9.23	3.08	<b>83.00</b>
SSS 5	45	15	3	1	1	69.23	23.08	4.62	1.54	1.54	<b>88.69</b>
SSS 6	38	16	8	2	1	58.46	24.62	12.31	3.08	1.54	<b>85.38</b>
SSS 7	42	17	4	1	1	64.62	26.15	6.15	1.54	1.54	<b>87.85</b>
SSS 8	35	17	10	1	2	53.85	26.15	15.38	1.54	3.08	<b>83.85</b>
SSS 9	49	11	2	2	1	75.38	16.92	3.08	3.08	1.54	<b>89.12</b>
SSS 10	50	6	2	1	1	76.92	9.23	3.08	1.54	1.54	<b>83.58</b>
SSS 11	39	12	7	1	1	60.00	18.46	10.77	1.54	1.54	<b>80.12</b>
SSS 12	41	18	2	2	2	63.08	27.69	3.08	3.08	3.08	<b>86.54</b>
SSS 13	32	20	8	3	2	49.23	30.77	12.31	4.62	3.08	<b>82.58</b>
SSS 14	41	10	9	3	2	63.08	15.38	13.85	4.62	3.08	<b>84.04</b>
SSS 15	38	10	12	4	1	58.46	15.38	18.46	6.15	1.54	<b>83.08</b>
SSS 16	46	10	5	2	2	70.77	15.38	7.69	3.08	3.08	<b>86.69</b>
SSS 17	35	17	8	4	1	53.85	26.15	12.31	6.15	1.54	<b>83.58</b>
SSS 18	40	12	10	2	1	61.54	18.46	15.38	3.08	1.54	<b>85.23</b>
SSS 19	5	7	15	30	8	7.69	10.77	23.08	46.15	12.31	<b>52.65</b>
SSS 20	46	11	3	3	2	70.77	16.92	4.62	4.62	3.08	<b>86.62</b>

**OVERALL PERCENTAGE OF STUDENT SATISFACTION**

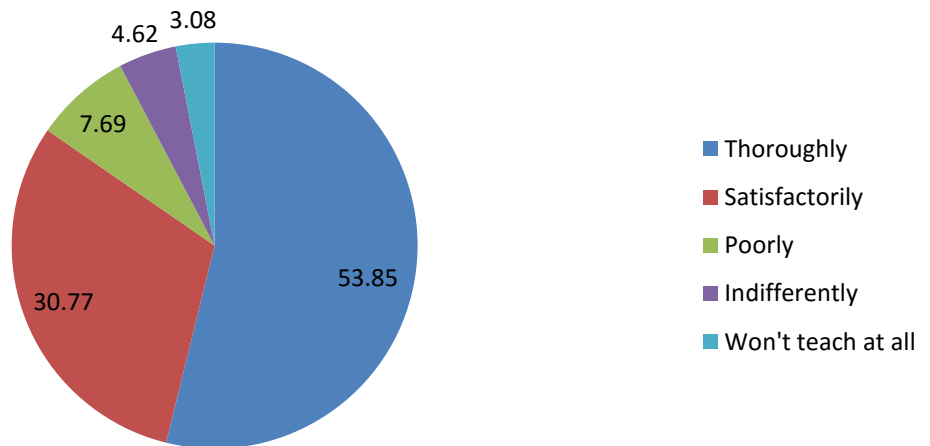
**83.34**



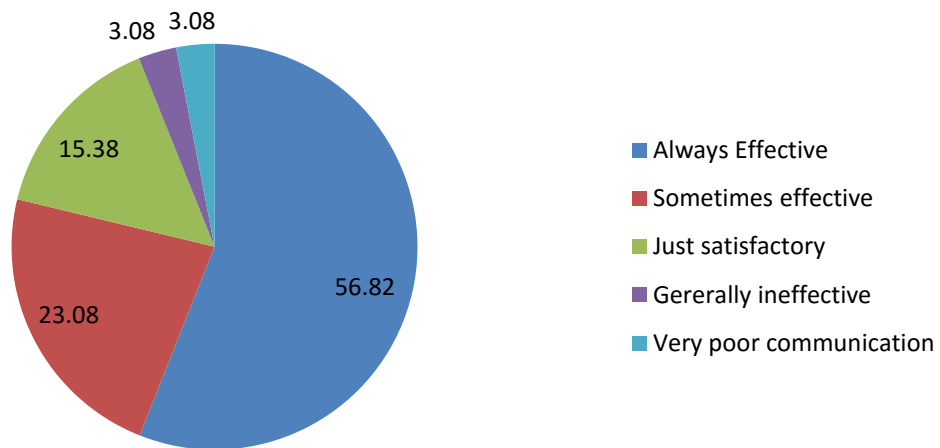
### 1. How most of the syllabus was covered in the class?



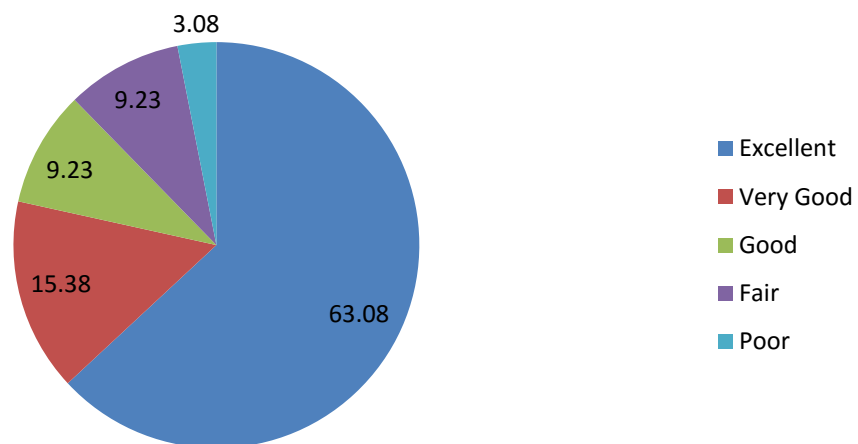
### 2. How well did the teachers prepare for the classes?



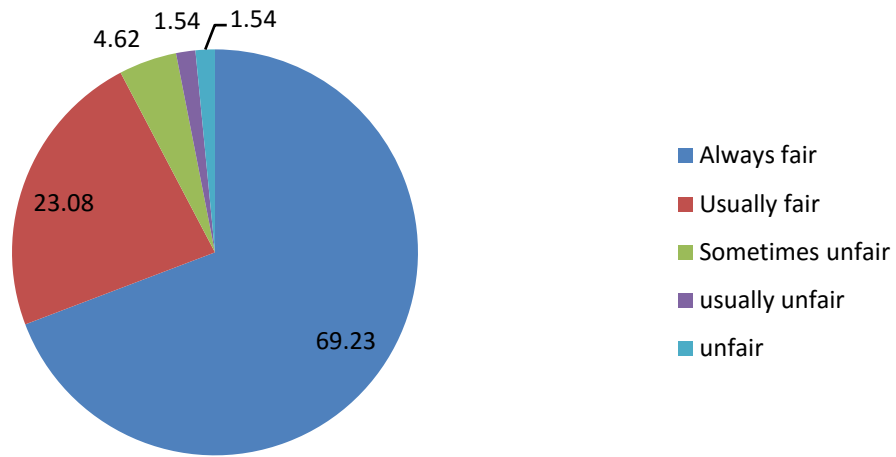
### 3. How well were the teachers able to communicate?



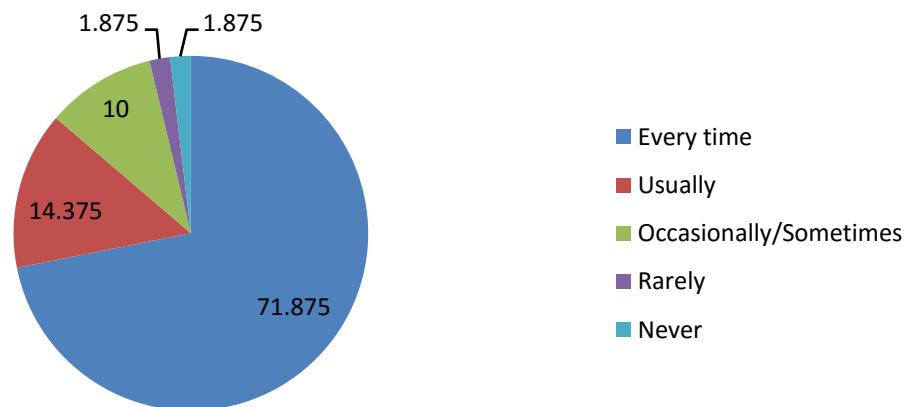
### 4. The teacher's approach to teaching can best be described as



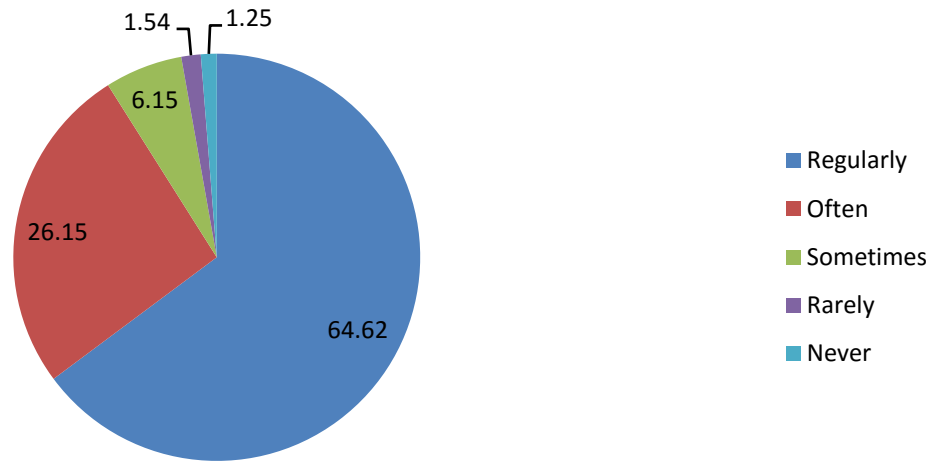
### 5. Fairness of the internal evaluation process by the teachers.



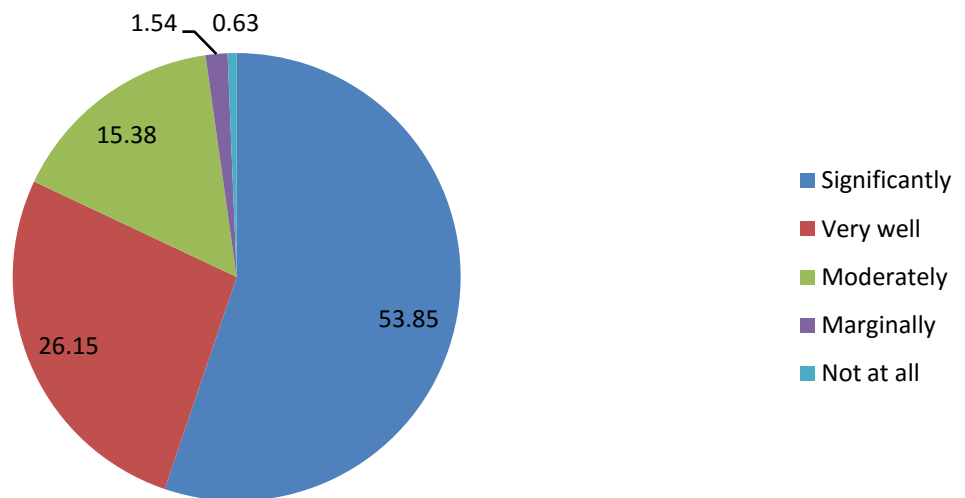
### 6. Was your performance in assignments discussed with you?



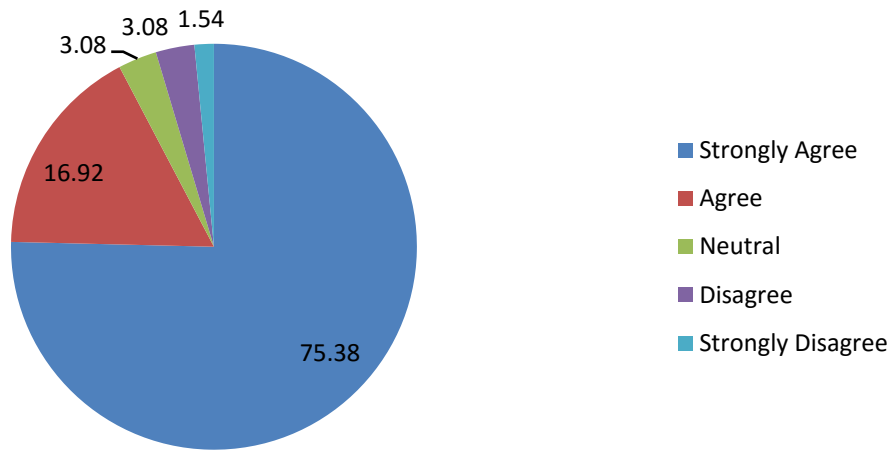
**7. The institute takes active interest in promoting internship, student exchange, field visit opportunities for students.**



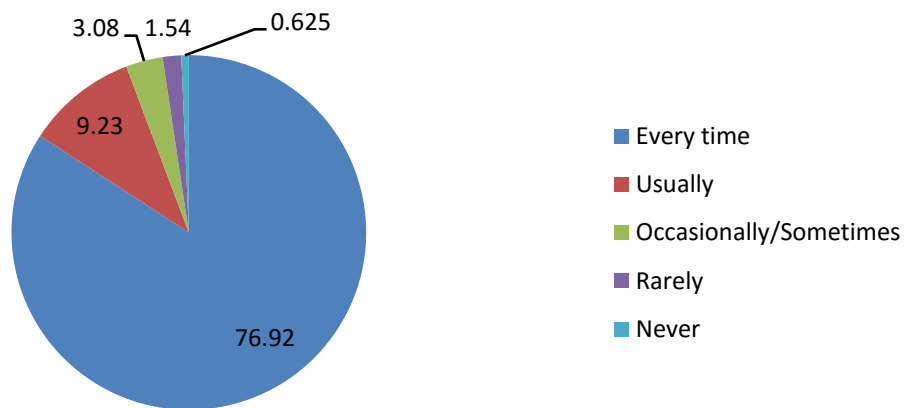
**8. The teaching and mentoring process in your institution facilitates you in cognitive, social and emotional growth.**



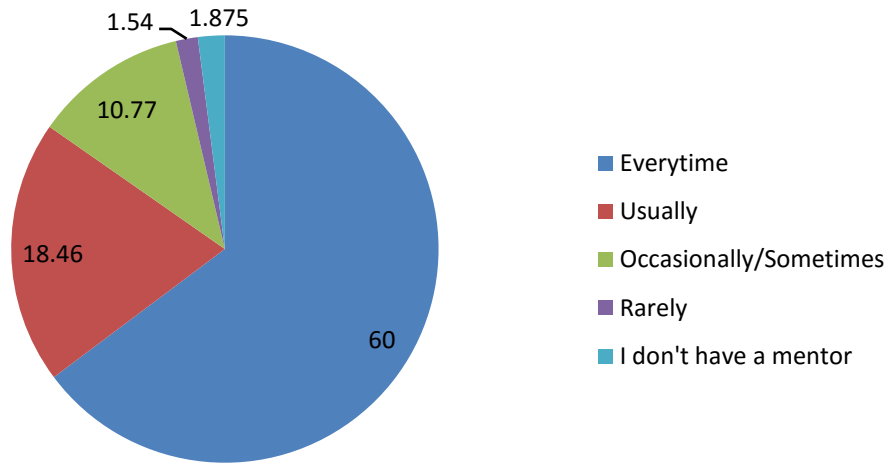
### 9. The institution provides multiple opportunities to learn and grow.



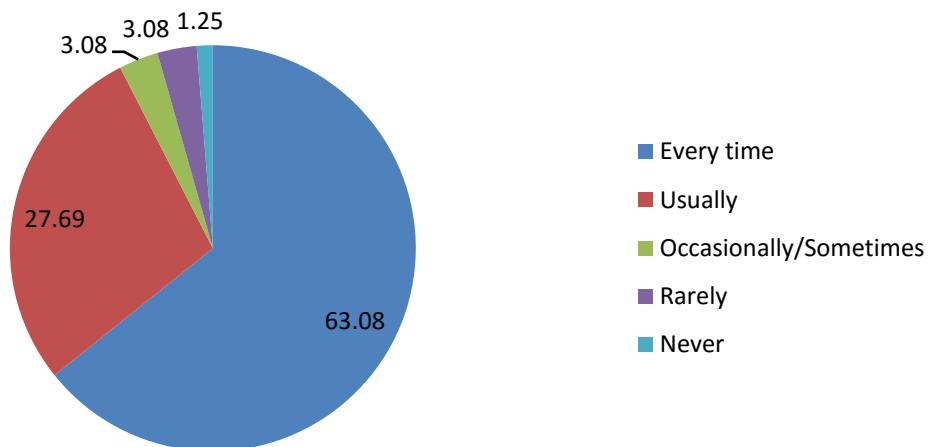
### 10. Teachers inform you about your expected competencies, course outcomes and programme outcomes.



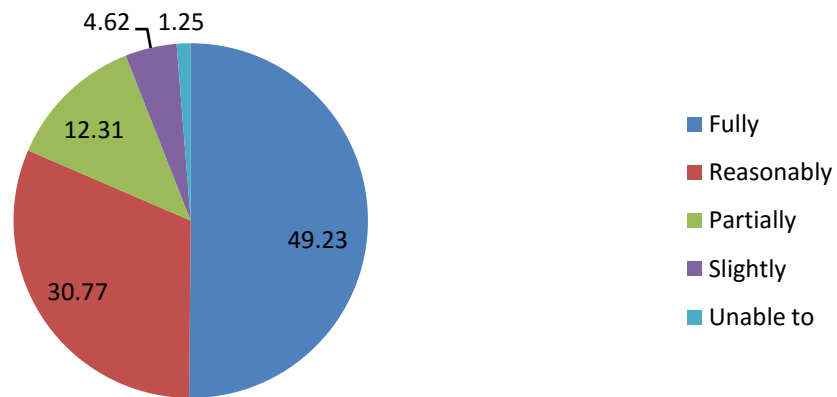
### 11. Your mentor does a necessary follow-up with an assigned task to you



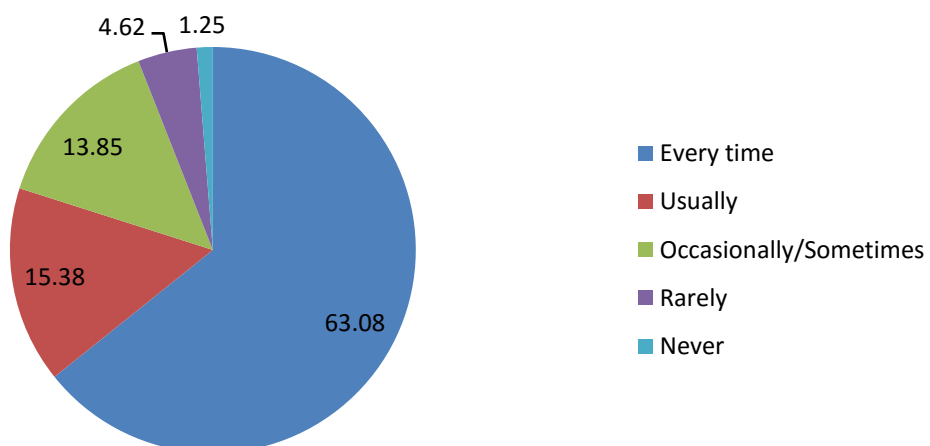
### 12. The teachers illustrate the concepts through examples and applications



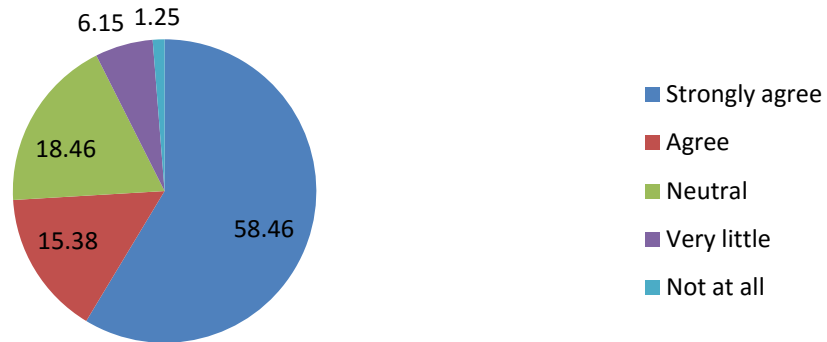
### 13. The teachers identify your strengths and encourage you with providing right level of challenges



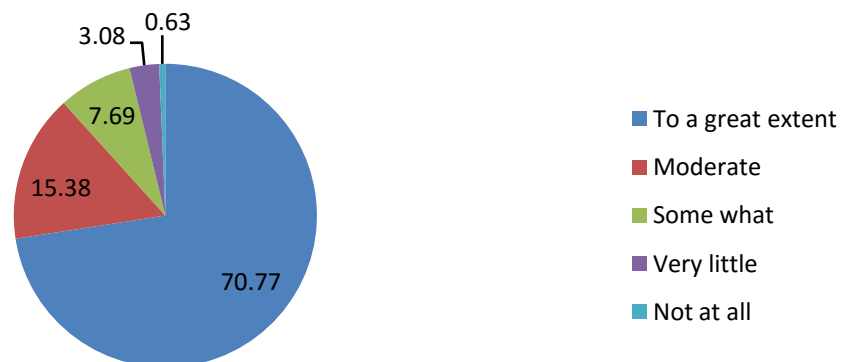
### 14. Teachers are able to identify your weaknesses and help you to overcome them



**15. The institution makes effort to engage students in monitoring, review and continuous quality improvement of the teaching learning process**

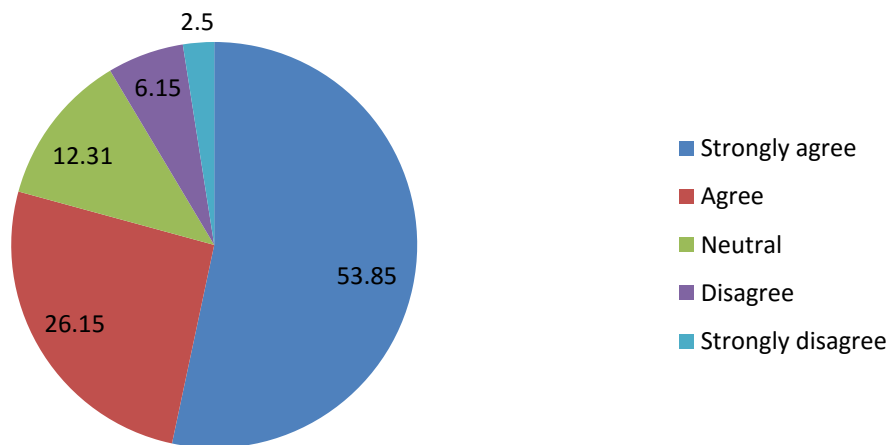


**16. The institute/teachers use student centric methods, such as experiential learning, participative learning and problem solving**

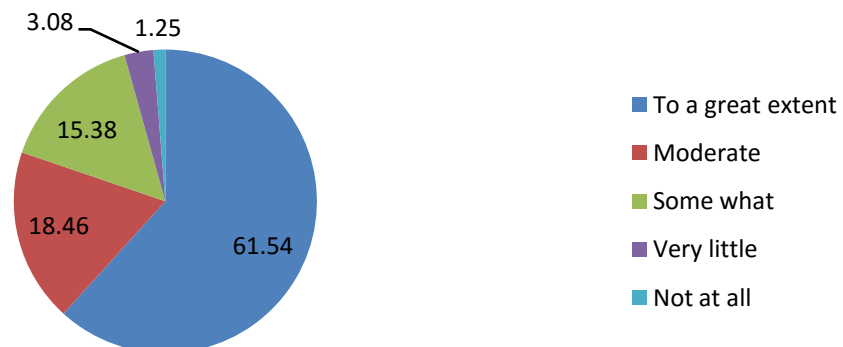




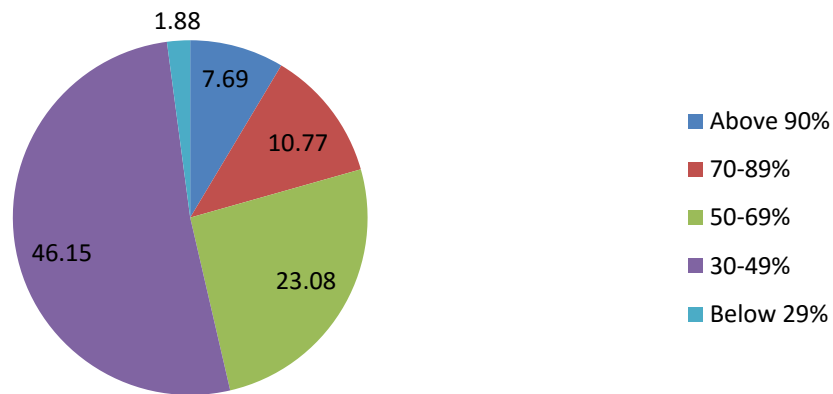
**17. Teachers encourage you to participate in extracurricular**



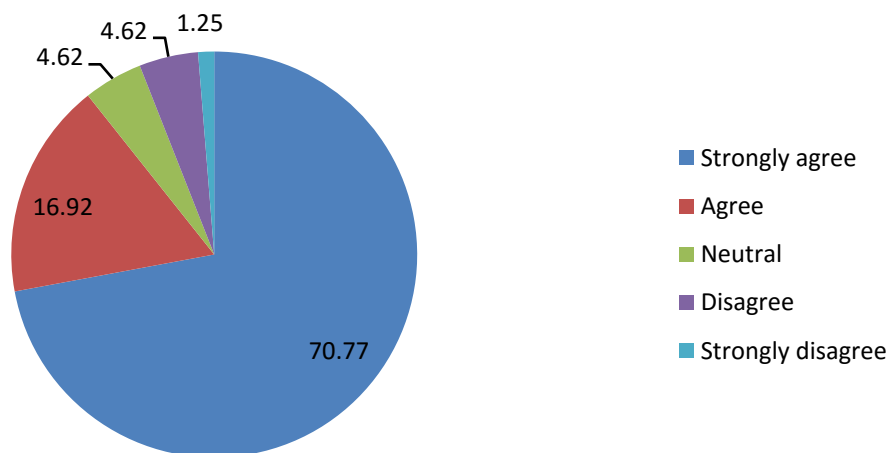
**18. Efforts are made by the institute/teachers to inculcate soft skills, life skills and employability skills to mark you ready for the world of work**



**19. What percentage of teachers use ICT tools such as LCD projector, Multimedia, etc. While teaching?**



**20. The overall quality of teaching-learning process in your institute is very good**



**21. Give three observation/suggestions to improve the overall teaching-learning experience in your institution.**

- We are fine with faculty with good suggestions.
- More Interaction.
- More books in library and E- library required.