

MAYURAKSHI GRAMIN COLLEGE

(Permanent Affiliated to S.K.M. University, Dumka, Jharkhand)

AT+P.O- RANISHWAR, DIST- DUMKA, 814148, JHARKHAND

STUDENT SATISFACTION SURVEY (SSS)

2019-20

Offline Student Satisfaction Survey Analysis Report (2019-20)

Student Satisfactory Survey with questionnaire proposed by the NAAC is collected offline this academic year. This questionnaire consists of 20 questions and 3 Suggestions which focuses on the teaching – learning, evaluation process and infrastructure of the institution. All questions are mandatory.

Mayurakshi Gramin College has conducted Student Satisfaction Survey for students. This was conducted offline by providing manual forms to students. Out of total students 160 students have given Feedback forms. Through Students Satisfaction Survey (SSS) outcome, computing & analyzing all responses is given separately for offline.

Overall Analysis of the Student Satisfaction Survey

The graphs represent the different views expressed by the students in regard to their perception of quality in the institution. On an average, 84.28% students are satisfied with the teaching methodology and facilities available at our institute.

National Assessment and Accreditation Council (NAAC)

Student Satisfaction Survey

Key Indicator-2.7.1

Under Criterion II OF Teaching-Learning and Evaluation

Guidelines for Students

NAAC (National Assessment and accreditation council) is conducting a Student Satisfaction Survey regarding Teaching –Learning and Evaluation, which will help to upgrade the quality in higher education. A student will have to respond to all the questions given in the following format with her/his sincere effort and thought. Her/his identity will not be revealed.

A) Please confirm this is the first and only time you answer this survey.

- a) Yes b) No

B) Age C) College Name:

D) Gender: a) Female b) Male C) Transgender

E) What degree program are you pursuing now?

- a) Bachelor's b) Master's c) M.Phil.
d) Doctorate e) Other

F) What subject area are you currently pursuing?

- a) Arts b) Commerce c) Science
d) Professional e) Other

Instructions to fill the questionnaire

- All questions should be compulsorily attempted.
- Each question has five responses, choose the most appropriate one.
- The response to the qualitative question no. 21 is student's opportunity to give suggestions or improvements; she/he can also mention weaknesses of the institute here. (Kindly restrict your response to teaching learning process only)

Student Satisfaction Survey on Teaching Process

Following are question for online student satisfaction survey regarding teaching learning process.

1. How much of the syllabus was covered in the class?

- 4- 85 to 100%
- 3- 70 to 84%
- 2- 55 to 69%
- 1- 30 to 54%
- 0-Below 30%

2. How well did the teachers prepare for the classes?

- 4-Thoroughly
- 3-Satisfactorily
- 2-Poorly
- 1-Indifferently
- 0-Won't teach at all

3. How well were the teachers able to communicate?

- 4-Always effective
- 3-Sometimes effective
- 2-Just satisfactorily
- 1-Generally ineffective
- 0-Very poor communication

4. The teacher's approach to teaching can best be described as

- 4-Excellent
- 3-Very good
- 2-Good
- 1-Fair
- 0-Poor

5. Fairness of the internal evaluation process by the teachers.

- 4-Always fair
- 3-Usually fair
- 2-Sometimes unfair
- 1-Usually unfair
- 0-Unfair

6. Was your performance in assignments discussed with you?

- 4-Every time
- 3-Usually
- 2-Occasionally/Sometimes
- 1-Rarely
- 0-Never

7. The institute takes active interest in promoting internship, student exchange, field visit opportunities for students.

- 4- Regularly
- 3- Often
- 2- Sometimes
- 1- Rarely
- 0- Never

8. The teaching and mentoring process in your institution facilitates you in cognitive, social and emotional growth.

- 4- Significantly
- 3- Very well
- 2- Moderately
- 1- Marginally
- 0- Not at all

9. The institution provides multiple opportunities to learn and grow.

- 4- Strongly agree
- 3- Agree
- 2- Neutral
- 1- Disagree
- 0- Strongly disagree

10. Teachers inform you about your expected competencies, course outcomes and programme outcomes.

- 4- Every time
- 3- Usually
- 2- Occasionally/Sometimes
- 1- Rarely
- 0- Never

11. Your mentor does a necessary follow-up with an assigned task to you.

- 4- Every time
- 3- Usually
- 2- Occasionally/Sometimes
- 1- Rarely
- 0- I don't have a mentor

12. The teachers illustrate the concepts through examples and applications.

- 4- Every time
- 3- Usually
- 2- Occasionally/Sometimes
- 1- Rarely
- 0- Never

13. The teachers identify your strengths and encourage you with providing right level of challenges.

- 4-Fully
- 3-Reasonably
- 2-Partially
- 1-Slightly
- 0-Unable to

14. Teachers are able to identify your weaknesses and help you to overcome them.

- 4-Every time
- 3-Usually
- 2-Occasionally/Sometimes
- 1-Rarely
- 0-Never

15. The institution makes effort to engage students in monitoring, review and continuous quality improvement of the teaching learning process.

- 4-Strongly agree
- 3-Agree
- 2-Neutral
- 1-Very little
- 0-Not at all

16. The institute/teachers use student centric methods, such as experiential learning, participative learning and problem solving.

- 4-To a great extent
- 3-Moderate
- 2-Some what
- 1-Very little
- 0-Not at all

17. Teachers encourage you to participate in extracurricular activities.

- 4-Strongly agree
- 3-Agree
- 2-Neutral
- 1-Disagree
- 0-Strongly disagree

18. Efforts are made by the institute/teachers to inculcate soft skills, life skills and employability skills to mark you ready for the world of work.

- 4-To a great extent
- 3-Moderate
- 2-Some what
- 1-Very little
- 0-Not at all

19. What percentage of teachers use ICT tools such as LCD projector, Multimedia, etc. While teaching.

4-Above 90%

3-70-89%

2-50-69%

1-30-49%

0-Below29%

20. The overall quality of teaching-learning process in your institute is very good.

4-Strongly agree

3-Agree

2-Neutral

1-Disagree

0-Strongly disagree

21. Give three observation/suggestions to improve the overall teaching-learning experience in your institution.

a)

b)

c)

STUDENT SATISFACTORY SURVEY REPORT

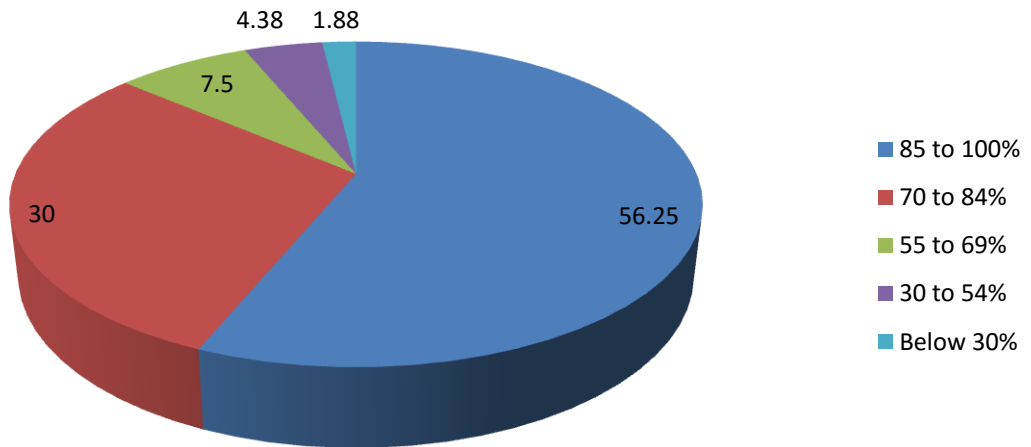
TOTAL NUMBER OF STUDENTS RESPONDED = 160

PARAMETERS	STUDENT RESPONSE (In Numbers)					STUDENT RESPONSE (In Percentage)					AVERAGE
	4	3	2	1	0	4	3	2	1	0	
SSS 1	90	48	12	7	3	56.25	30.00	7.50	4.38	1.88	85.20
SSS 2	105	35	10	6	4	65.63	21.88	6.25	3.75	2.50	86.42
SSS 3	108	22	15	11	4	67.50	13.75	9.38	6.88	2.50	84.86
SSS 4	98	39	13	7	3	61.25	24.38	8.13	4.38	1.88	85.72
SSS 5	118	22	15	3	2	73.75	13.75	9.38	1.88	1.25	88.48
SSS 6	115	23	16	3	3	71.88	14.38	10.00	1.88	1.88	87.72
SSS 7	124	20	10	4	2	77.50	12.50	6.25	2.50	1.25	89.25
SSS 8	95	46	14	4	1	59.38	28.75	8.75	2.50	0.63	86.97
SSS 9	117	23	12	6	2	73.13	14.38	7.50	3.75	1.25	87.98
SSS 10	113	26	17	3	1	70.63	16.25	10.63	1.88	0.63	88.30
SSS 11	109	34	9	5	3	68.13	21.25	5.63	3.13	1.88	87.52
SSS 12	113	29	10	6	2	70.63	18.13	6.25	3.75	1.25	87.89
SSS 13	91	29	35	3	2	56.88	18.13	21.88	1.88	1.25	84.19
SSS 14	100	50	6	2	2	62.50	31.25	3.75	1.25	1.25	88.31
SSS 15	121	30	4	3	2	75.63	18.75	2.50	1.88	1.25	89.92
SSS 16	95	33	28	3	1	59.38	20.63	17.50	1.88	0.63	85.69
SSS 17	105	25	20	6	4	65.63	15.63	12.50	3.75	2.50	85.33
SSS 18	20	27	108	3	2	12.50	16.88	67.50	1.88	1.25	70.66
SSS 19	8	25	13	111	3	5.00	15.63	8.13	69.38	1.88	52.69
SSS 20	76	40	39	3	2	47.50	25.00	24.38	1.88	1.25	82.58

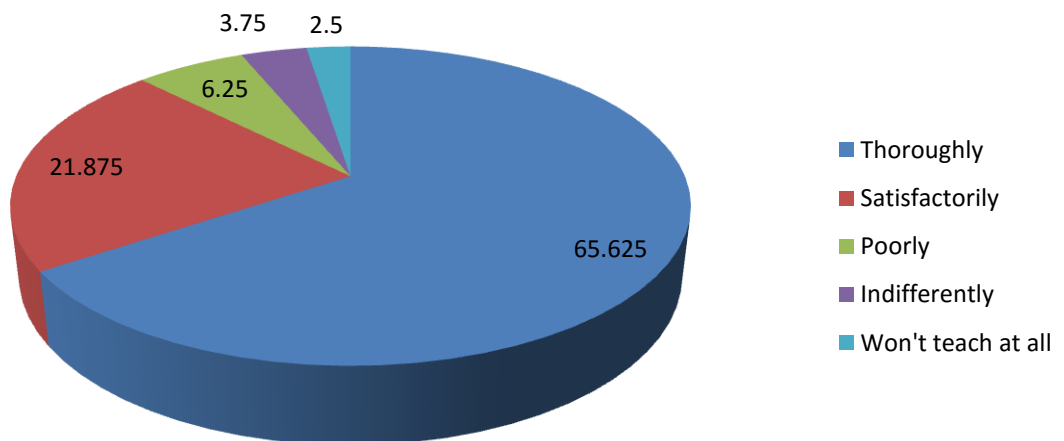
OVERALL PERCENTAGE OF STUDENT SATISFACTION

84.28

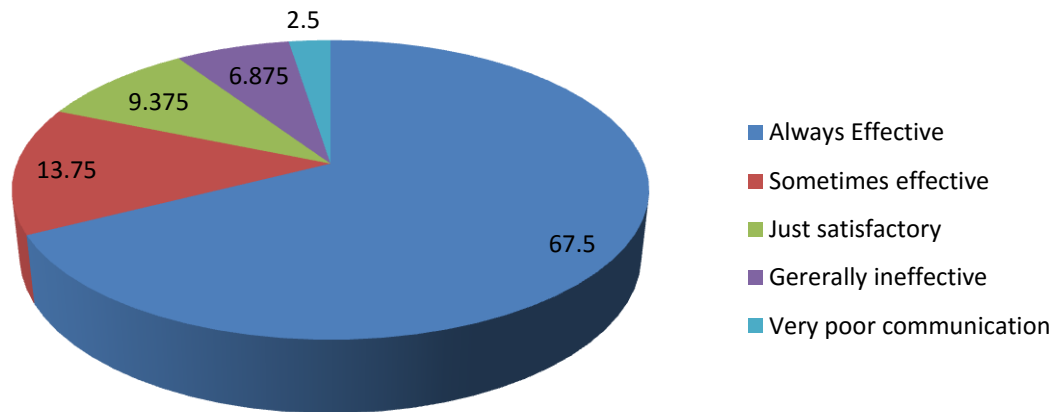
1. How most of the syllabus was covered in the class?



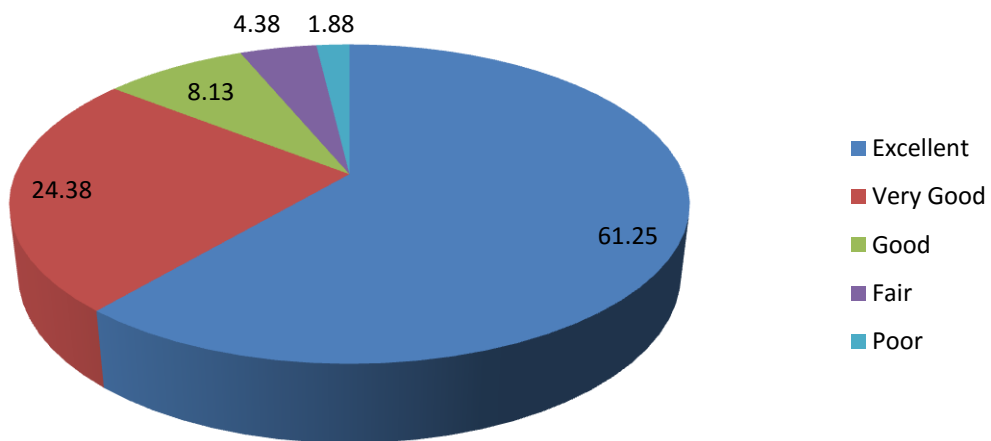
2. How well did the teachers prepare for the classes?



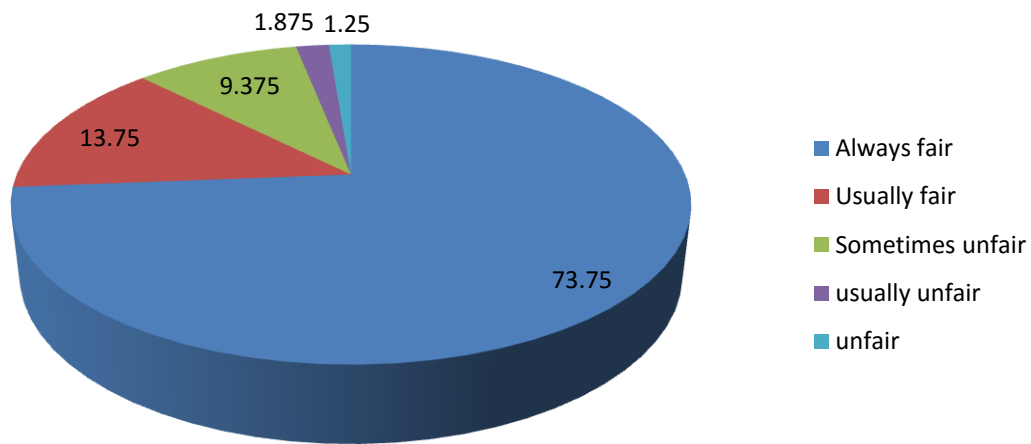
3. How well were the teachers able to communicate?



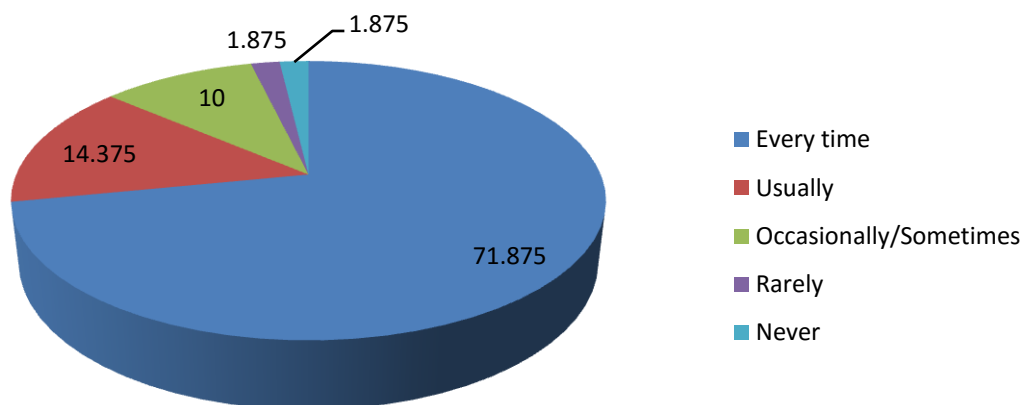
4. The teacher's approach to teaching can best be described as



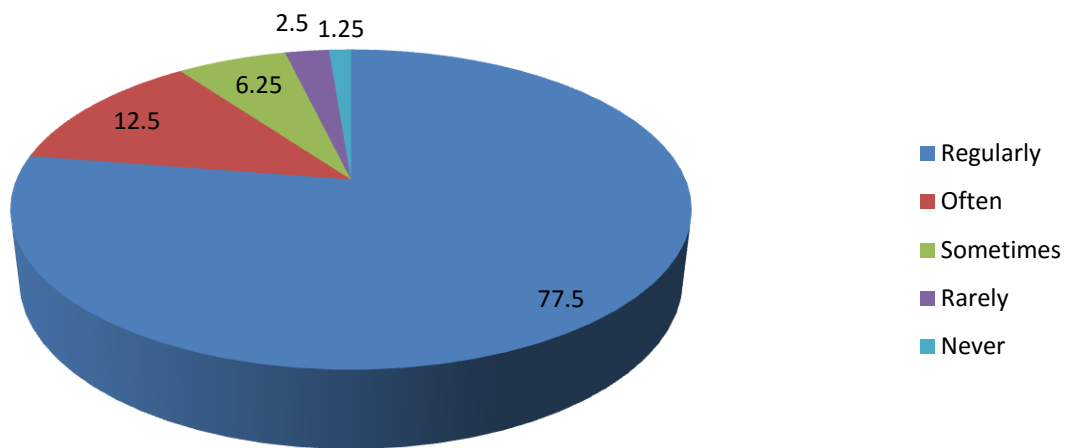
5. Fairness of the internal evaluation process by the teachers.



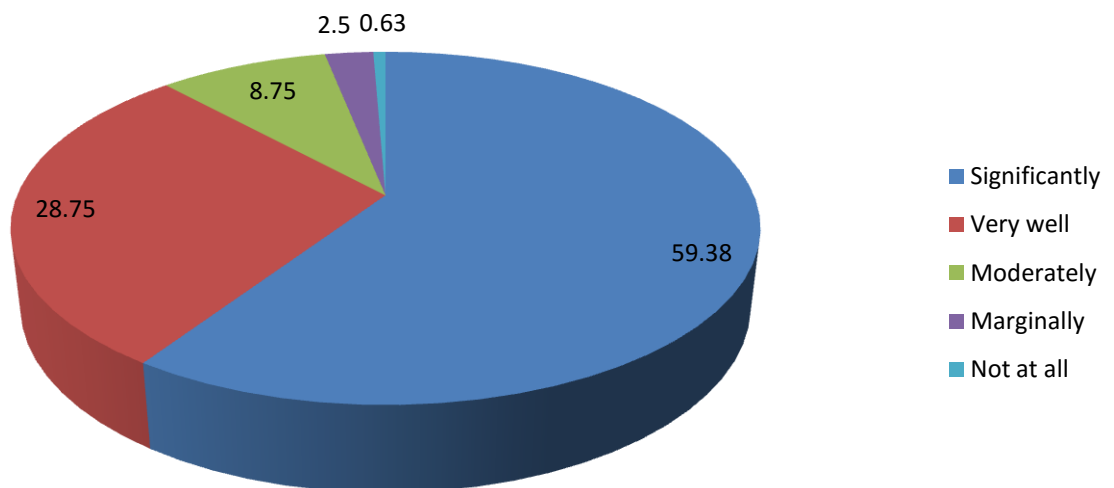
6. Was your performance in assignments discussed with you?



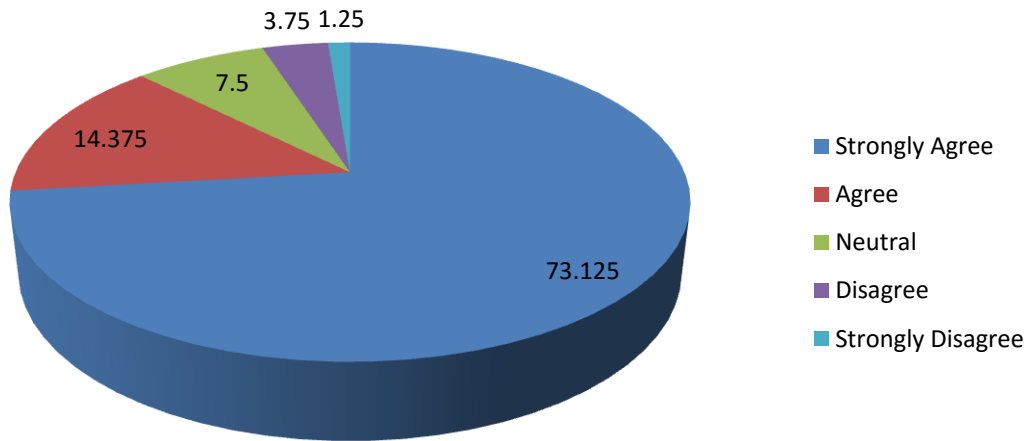
7. The institute takes active interest in promoting internship, student exchange, field visit opportunities for students.



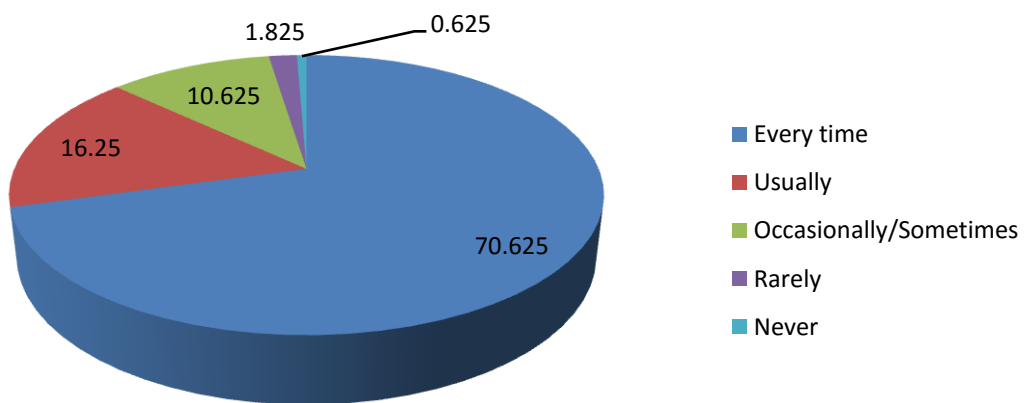
8. The teaching and mentoring process in your institution facilitates you in cognitive, social and emotional growth.



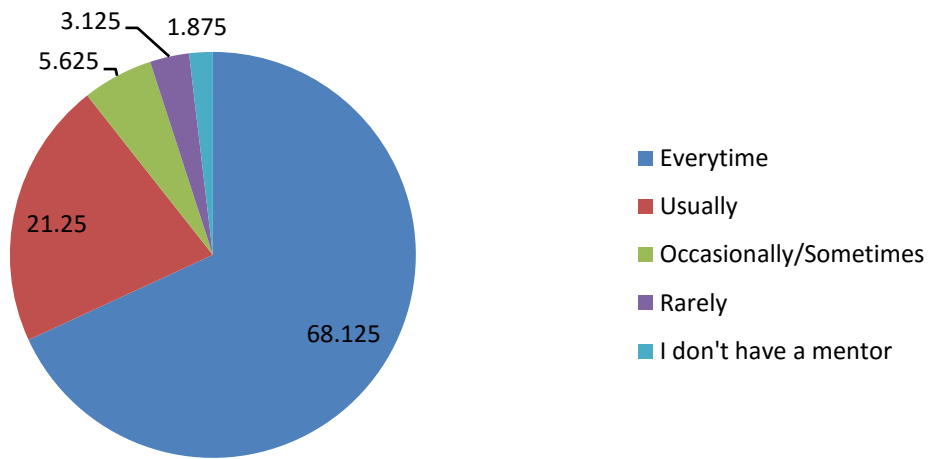
9. The institution provides multiple opportunities to learn and grow.



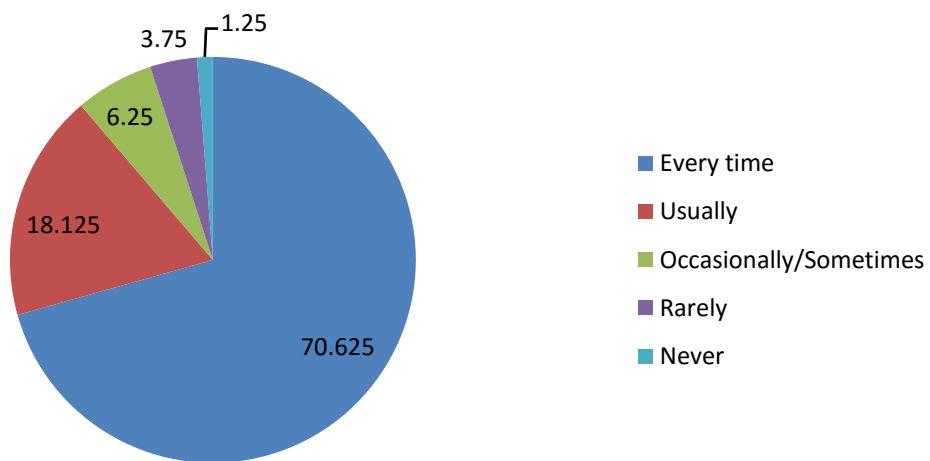
10. Teachers inform you about your expected competencies, course outcomes and programme outcomes.



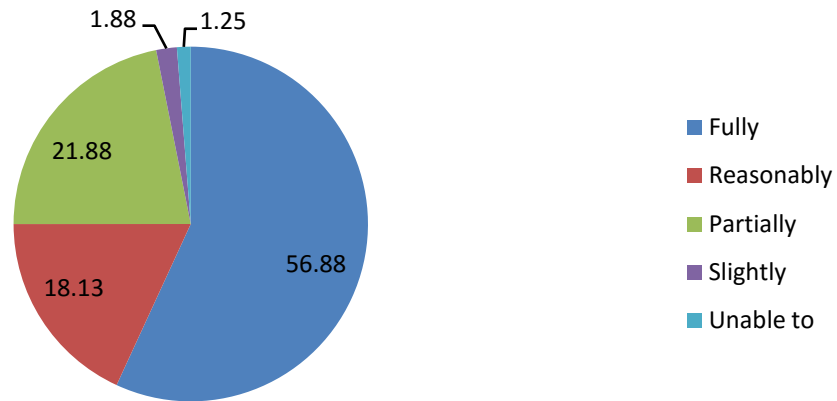
11. Your mentor does a necessary follow-up with an assigned task to you



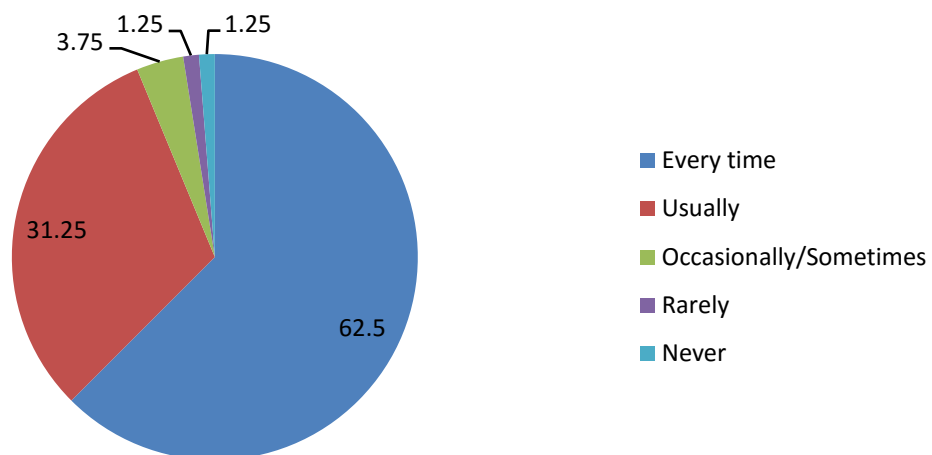
12. The teachers illustrate the concepts through examples and applications



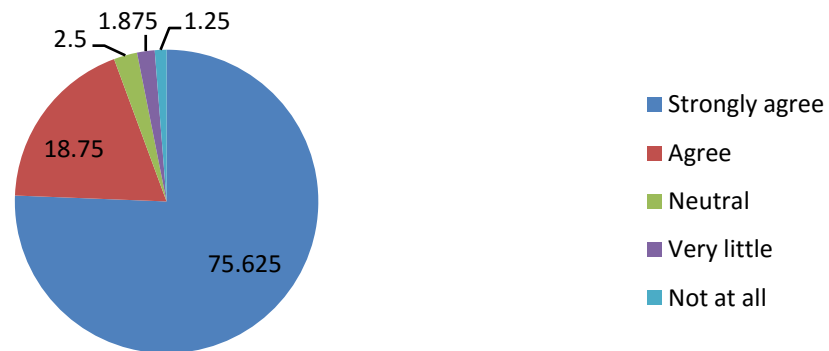
13. The teachers identify your strengths and encourage you with providing right level of challenges



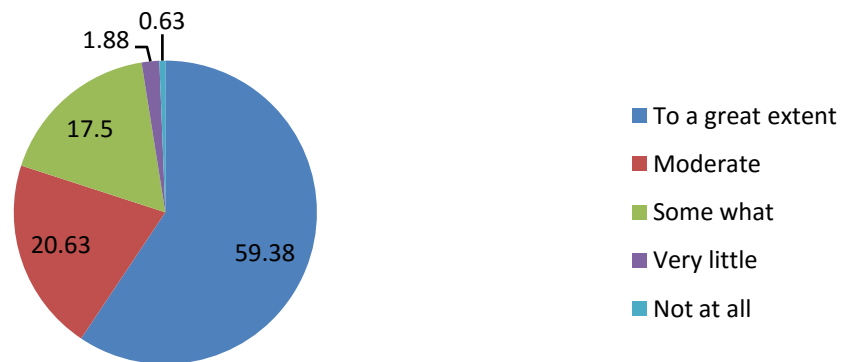
14. Teachers are able to identify your weaknesses and help you to overcome them



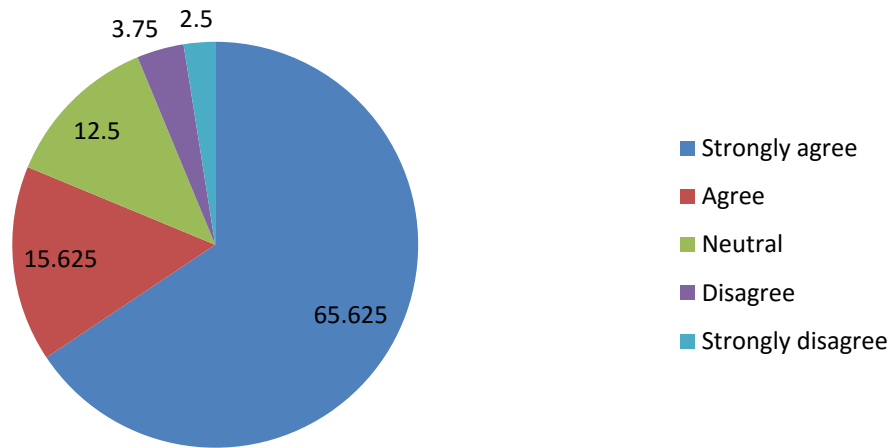
15. The institution makes effort to engage students in monitoring, review and continuous quality improvement of the teaching learning process



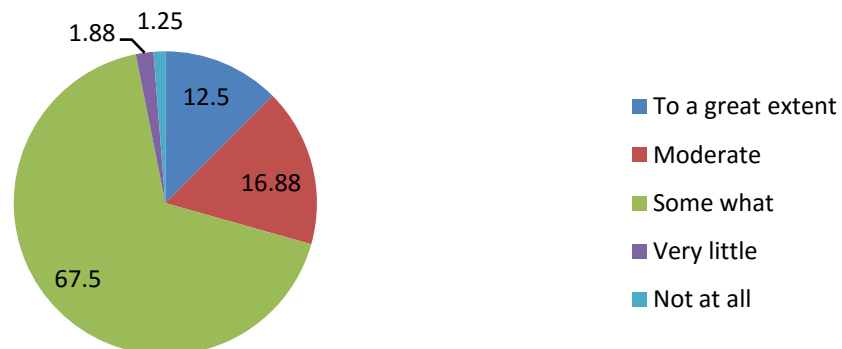
16. The institute/teachers use student centric methods, such as experiential learning, participative learning and problem solving



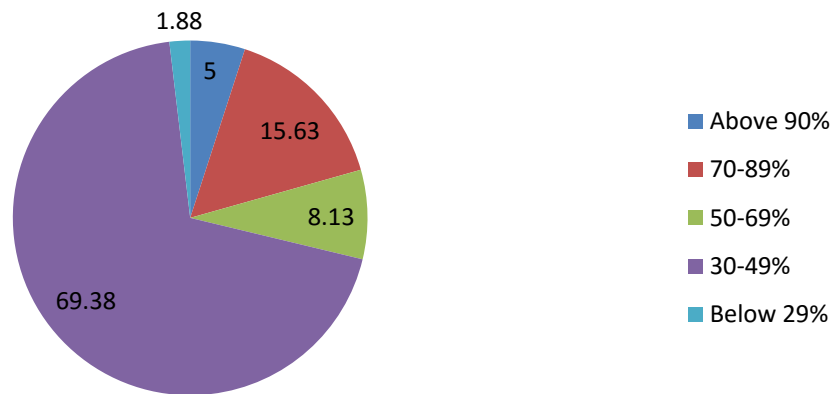
17. Teachers encourage you to participate in extracurricular



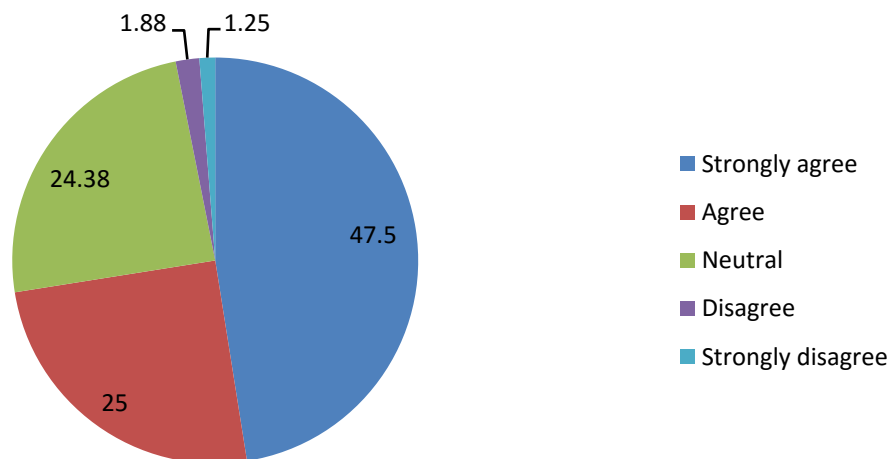
18. Efforts are made by the institute/teachers to inculcate soft skills, life skills and employability skills to mark you ready for the world of work



19. What percentage of teachers use ICT tools such as LCD projector, Multimedia, etc. While teaching?



20. The overall quality of teaching-learning process in your institute is very good



21. Give three observation/suggestions to improve the overall teaching-learning experience in your institution.

- We are fine with faculty with good suggestions.
- More Interaction.
- More books in library and E- library required.